

Are we accessible to you? if not tell us.

Czy masz dostęp do nas? Jeżeli nie to zapytaj nas o pomoc.

Bãin còu tiáp xuùc nãõõic vòuì chuùng toài khowng?
Neáu khowng, haõy hoüi chuùng toài.

আপনার কাছে আমরা কি সহজেই লভ্য ?
যদি তা না হয় - তবে আমাদের জিজ্ঞাসা করুন।

閣下能否容易地向我們取得資訊?
假如是否的話, 請向我們查詢。

શું તમે અમારો સંપર્ક સારી રીતે છો? નહીં - તો અમને ખબર કરો.

☎ 0800 0852493

 **PassporttoSuccess**

C/O Vale Royal Borough Council
Wyvern House, The Drumber, Winsford, Cheshire CW7 1AH
telephone: 01606 862862
fax: 01606 862100
www.valeroyal.gov.uk

 **PassporttoSuccess**

a neighbourhood renewal
plan for vale royal 2005-2010

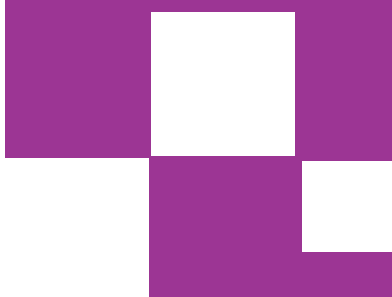


a neighbourhood renewal plan for vale royal 2005-2010

Contents

2	01_ Introduction
6	02_ Deprivation
12	03_ Passport to Success Key Projects
19	04_ Actions

Appendix A Deprivation Measures
Appendix B Maps



01_Introduction

The Neighbourhood Renewal Plan for Vale Royal – ‘Passport to Success’, is based on the principal objectives of the Community Plan, and reflects the key objectives of the partners of the Vale Royal Community Forum (the Local Strategic Partnership).

“We want the Borough of Vale Royal to be a safe, fair and prosperous place to live, where diversity is respected and all people enjoy a good quality of life both now and in the future”

Mission Statement – Vale Royal Community Forum

The Neighbourhood Renewal Plan aims to improve the quality of life for communities in the more disadvantaged areas of Vale Royal in five key areas: -

- Education
- Employment
- Housing and Environment (including transport)
- Community Safety
- Health

This plan outlines key performance indicators and targets in key areas, existing projects and initiatives, and plans for future actions.

The Plan has four main purposes: -

- To provide a strategic context for neighbourhood renewal in Vale Royal
- To act as the local economic renewal plan for Vale Royal
- To provide a framework for existing investment and future investment including external resources
- To provide local communities with improved opportunities for participation in local renewal projects.

S McGuirk Chair Vale Royal Community Forum

Background

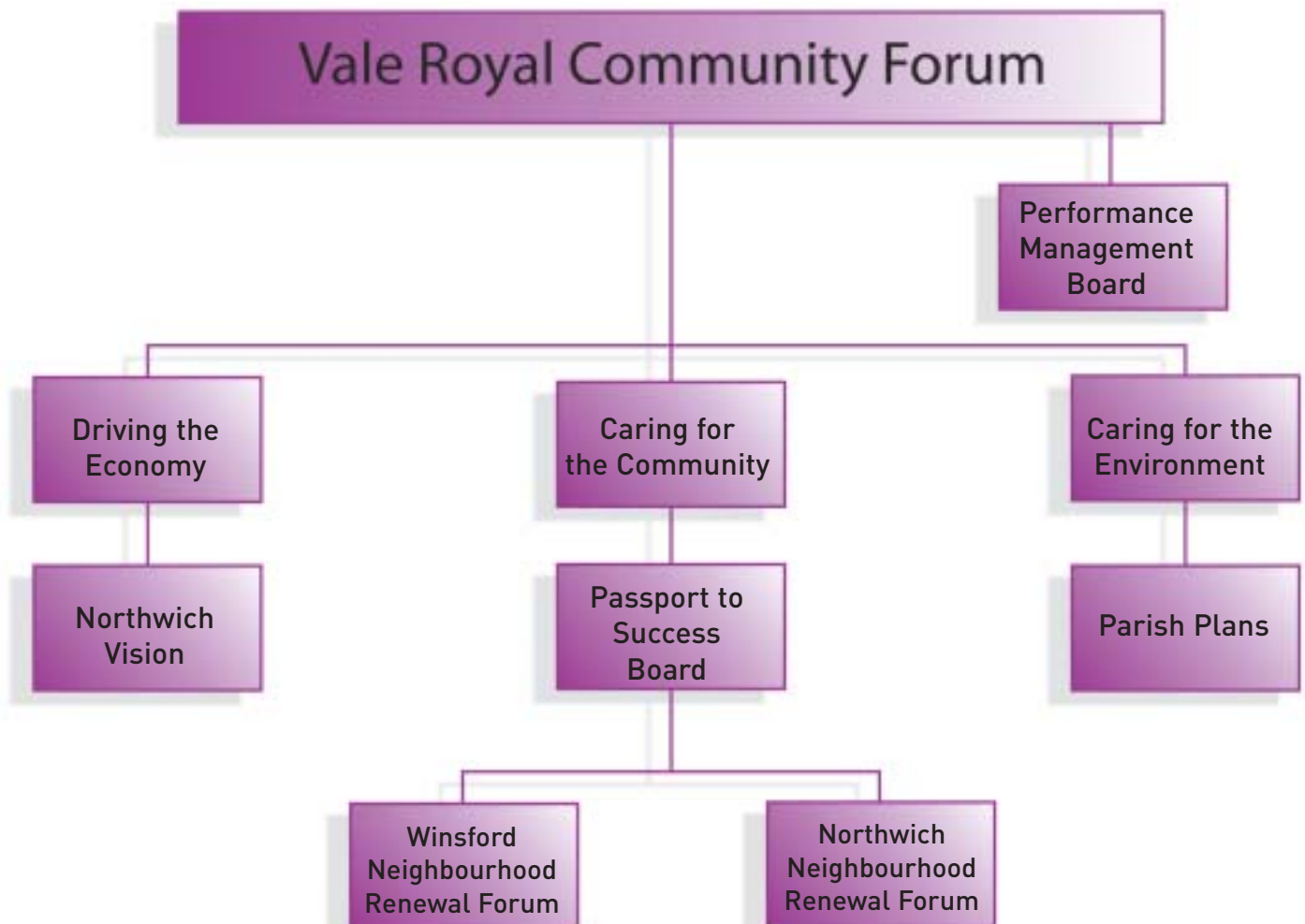
Neighbourhood Renewal Plans (NRP's) have been produced for the most deprived local authority areas in the country, following guidance from central government. Whilst Vale Royal is not one of these areas there are disadvantaged areas in Vale Royal in the top 20% of areas nationally. The Local Strategic Partnership has decided to produce a NRP for Vale Royal to ensure that there is a cohesive planning framework for existing and future investment in economic, social and environmental regeneration initiatives.

Organisations in Vale Royal have worked in partnership to improve the quality of life in areas of neighbourhood renewal for a number of years, most significantly in Winsford through

the Winsford Into Work Programme (the Single Regeneration Budget Partnership).

There are also a number of initiatives and area-based programmes, which are now operational e.g., Sure Start in areas of Winsford, the Northwich Vision (land stabilisation programme and physical regeneration of Northwich Town Centre). This Neighbourhood Renewal Plan builds on this partnership work, recently commissioned research from a range of sources, community consultation projects, and national and regional good practice.

The delivery mechanism for the Neighbourhood Renewal Plan is outlined below:-



Overall context of neighbourhood renewal in vale royal

Vale Royal is in mid Cheshire and is a

mix of urban and rural areas.

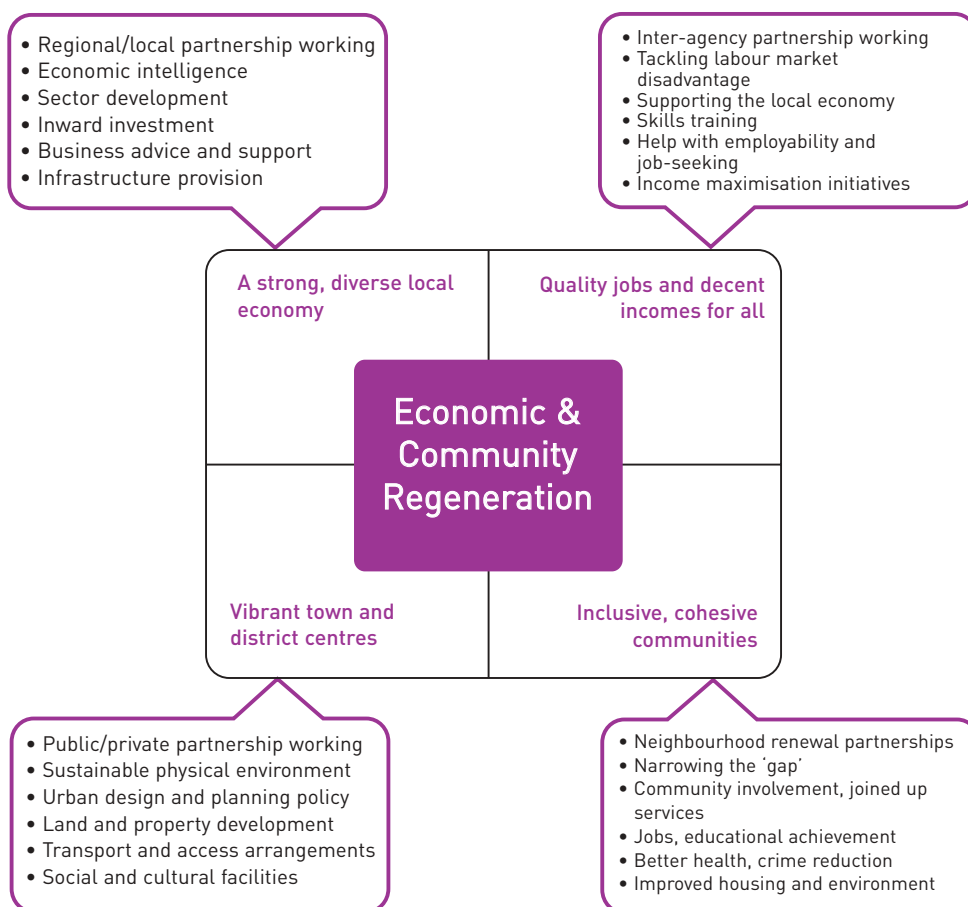
Winsford, in the heart of the Cheshire plain, was transformed in the 1960's and 1970's as a result of the government's 'overspill' programme. The town was called upon to accommodate residents of inner city clearance areas in Manchester and Liverpool. Whilst large-scale local authority estates were built, a change in policy meant that much of the supporting social and community infrastructure was not completed. In addition, the various incentives that were intended to encourage industrial development and relocation were also abandoned.

The development of Northwich originated from its wealth gained from the salt works. However the constant salt mining and the honeycomb network of mines in the late 19th century caused severe subsidence. This meant that the

structures of the houses had to be altered and made lighter so that foundations could be raised or even moved. About 19,000 people now live in the town of Northwich (although the data in this report also includes the villages surrounding the town, bringing the total population to over 50,000), which will benefit from the £32m being invested by English Partnerships to stabilise the salt mines and secure brownfield sites for redevelopment.

The Neighbourhood Renewal Plan seeks to bring together the social, economic and environmental regeneration initiatives, which will make a significant contribution to improving key performance indicators in these areas. A recent good practice guide from the Audit commission illustrates this process.

'Economic and Community Regeneration'
- Audit Commission 2003



Community Participation and Research Mid-Cheshire Area Study

Key findings were brought out in a document entitled the The Mid Cheshire Area Study 2002 concerning Winsford, Northwich and the surrounding areas. The Study claimed that the 'Winsford area of Mid-Cheshire has deprivation indicators that are quite uncharacteristic of Cheshire as a whole.' The study's survey with young people suggested that there was a lack of information about training and education opportunities available to young people in the local area.

Winsford into Work - Single Regeneration Budget (SRB)

This was a five-year scheme 1998 - 2003 targeting five deprived wards in Winsford. The scheme aimed to equip residents with the social and employment skills necessary for them to take advantage of local job opportunities. The scheme also tackled poor attainment amongst school children at key stages and young adults, by aiming to improve basic skills.

Partners involved in the Single Regeneration Partnership delivered the following programmes:

Family Education: each of the schools in Winsford took part in a range of initiatives to improve key skills, motivation and confidence. These ranged from the First Steps programme in primary schools (13) Success maker in Secondary Schools (2) the development of Nurturing Units in two primary schools, and Family Education sessions offered by Mid Cheshire College working with parents in the primary sector. The Winsford Education Partnership now includes all 17 schools in the town, and has received funding from the National College for School Leadership.

Business Start Up - Business Link, Cheshire County Council and Vale Royal Borough

Council worked with individuals who were unemployed to assist them to either become self employed or involved in a community enterprise. Training, mentoring and small grants were offered.

Mentoring Action - The Connexions Service worked with young people aged 16 - 19 who were not in education, training or employment through a programme designed to enhance confidence, motivation and opportunity.

Options for Change - Cheshire County Council, Employment Service, Vale Royal Borough Council, and local voluntary sector and training providers came together to assist people who were unemployed who needed additional, often practical, help to access employment or training.

Healthy Winsford - An alliance of organisations, agencies and individuals with an interest in health issues, especially those affecting young people worked together to develop a network to share information and good practice.

Training and Re-settlement project - YWCA - SRB funding was granted to employ a part time worker, based at Cotswold House to work with young women from the project and the surrounding community to offer support, and to help them to develop skills, confidence and motivation to assist them to obtain employment, return to education, or take part in training.



Hoshin Studies

As part of the Winsford SRB programme an evaluation was carried out with recommendations for future action – the Hoshin study. This process included interviews with the major partners, an evaluation of the SRB outcomes, and focus groups carried out by the community for the community. This consisted of training local individuals to carry out focus groups and support. The focus groups were carried out and led directly to the evaluation and recommendations for further action.

These recommendations were used as the basis for the bid to the NWDA – Passport to Success. The contracts for this work reflected the wishes of the local community – Housing Benefits advice at the Job Centre, local delivery of training and advice etc.

There was a further Hoshin study carried out in Rudheath and Witton in 2004 which look at the barriers for learning, education, training and employment in these areas. The findings for these studies have formed the Employment and Training sections of the Passport to Success - Neighbourhood Renewal Plan.

See page 7 for the main recommendations

Rudheath Learning Report

The Borough Council, through external funding from Cheshire Learning Partnership, employed an outreach worker to carry out face to face interviews with a range of local community groups and individuals and commissioned a video company to record interviews with individuals. The main results of these studies were a tradition of “lifetime” jobs in former major employer ICI, school qualifications were not perceived as being relevant, lack of childcare and transport, a need for a more informal approach and a need for locally based provision. This resulted in the establishment of local cybercafe, a local learning Centre, a part time post created by Mid Cheshire College to improve the offer at the local High School, and a Womens Development Worker.

Main Recommendations from Hoshin Studies

1] Winsford

Priority	Issue	Recommendation Action
Learning	Community Based Education	New Learning Centre with significant outreach
	Linking Learning with Employment Opportunities	New Learning Centre (requires immediate attention)
Employment	Labour Market Information	Develop real time local labour market information
	Improving Self Esteem	New Learning Centre with community representation on its management board/Job Brokerage Scheme
	Caring Responsibilities	Work Life Balance Pilot extending beyond Vale Royal Borough Council's retention policies to include childcare provision
	The Benefits Trap	Benefits Flexibility Pilot (by Vale Royal Borough Council)
	Insecure Working Environments	Social Enterprise Employment Agency
	Labour Market Information	Develop system for ensuring that employer lead labour market information is reflected in learning provision
Enterprise	Business Formation	Sirolli Pilot

2] Northwich

Social Inclusion	Ensure that there exists a rich variety of opportunities for young people and adults from Rudheath and Witton to re-engage with Northwich and share in its future prosperity. This cannot be achieved by a single simple message but by ensuring that the fabric of the community is enhanced (for example through community based education and community facilities. In addition, using planning policy to develop a greater diversity of housing will help to break down the divisions between the town and east Northwich.
Learning	The local primary and secondary schools in Rudheath and Witton need to be supported in narrowing the gap between their performance and those in the rest of Northwich. Young people need to be encouraged to acquire higher-level qualifications in Business Administration and ICT and provision developed to meet this increased demand. Community lead and based learning is an important feature in re-engaging adults and in developing the confidence of adults to re-engage with the wider community.

02_Deprivation

The English Indices of Deprivation 2004 (IMD 2004) (see page 22 for map)

The IMD 2004 provides in-depth information to pinpoint small pockets of deprivation. The information helps to target policies and funding across a range of services

The index is based on 32,482 Super Output Areas (SOA) which is a geographical area covering 1000/3000 people. The SOAs are ranked according to how deprived they are relative to other SOAs, with 1 being the most deprived.

The seven domains of deprivation which make up the data for the SOAs are:

	Domain Weights for the IMD 2004
• Income deprivation	22.5%
• Employment deprivation	22.5%
• Health deprivation and disability	13.5%
• Education, skills and training deprivation	13.5%
• Barriers to Housing and Services	9.3%
• Crime	9.3%
• Living Environment	9.3%

The main SOA's areas in Vale Royal are:

- Dene, Winsford
- Glebe Green, Winsford
- Wharton, Winsford
- Over Estate, Winsford
- Witton North, Northwich
- Witton South, Northwich
- Rudheath, Northwich
- Greenbank, Northwich

Each of these domains is made up of a number of indicators which reflect different dimensions of deprivation, there are 37 in total.

Income deprivation domain

The purpose of this Domain is to capture the proportions of the population experiencing income deprivation in an area.

Indicators

- Adults and children in Income Support households
- Adults and children in Income Based Job Seekers Allowance households
- Adults and children in Working Families Tax Credit households whose equivalised income (excluding housing benefit) is below 60% of median before housing costs
- Adults and children in Disabled Person's Tax Credit households whose equivalised income (excluding housing benefit) is below 60% of median before housing costs
- National Asylum Support Service supported asylum seekers in England in receipt of subsistence only and accommodation support

Employment Deprivation Domain

This Domain measures employment deprivation taken as involuntary exclusion of the working age population from the world of work.

Indicators

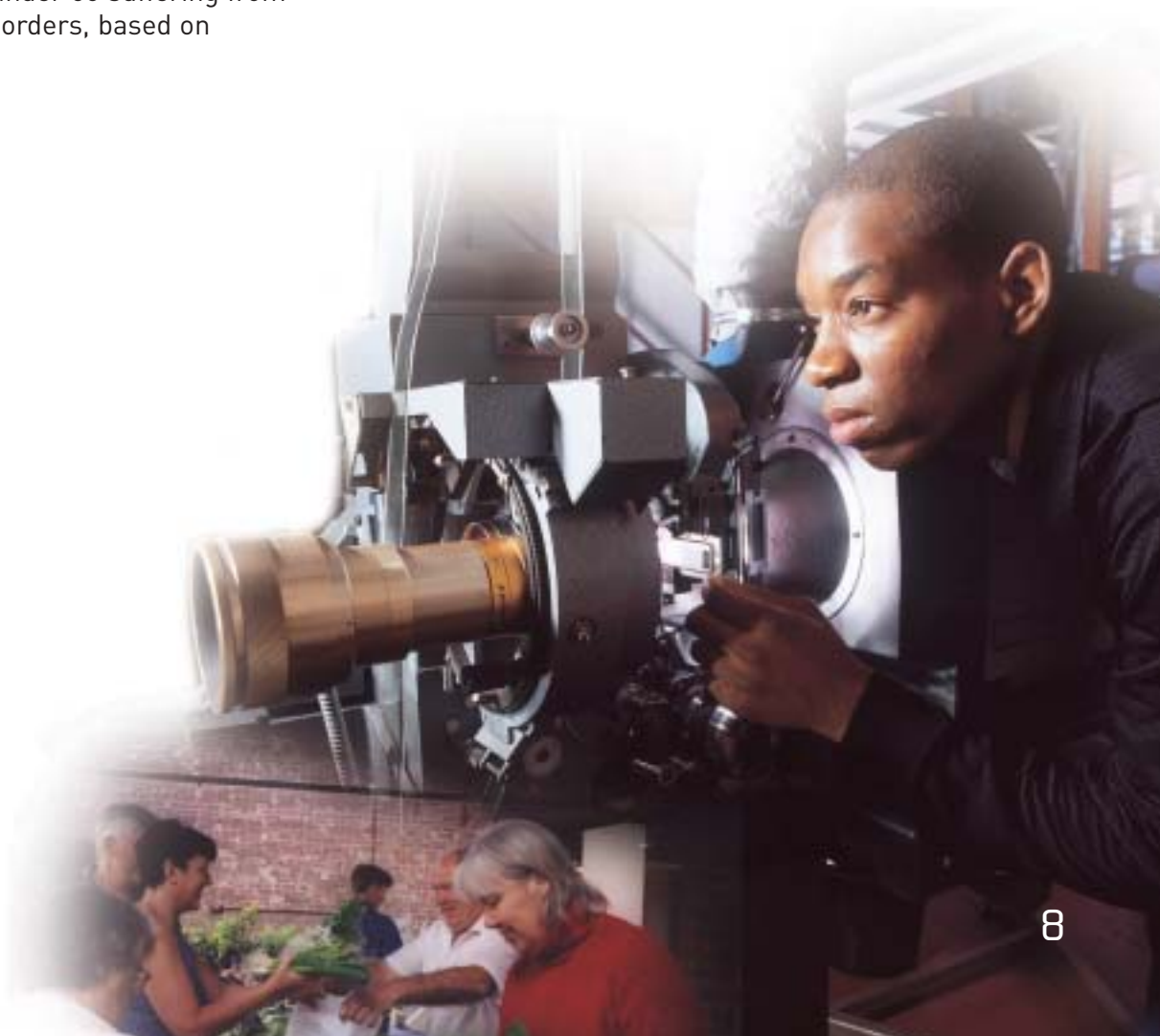
- Unemployment claimant count (JUVOS) of women aged 18-59 and men aged 18-64 averaged over four quarters
- Incapacity Benefit claimants women aged 18-59 and men aged 18-64
- Severe Disablement Allowance claimants women aged 18-59 and men aged 18-64
- Participants in New Deal for 18-24's who are not included in the claimant count
- Participants in New Deal for 25+ who are not included in the claimant count
- Participants in New Deal for Lone Parents aged 18 and over

Health Deprivation and Disability Domain

This domain identifies areas with relatively high rates of of people who die prematurely or whose quality of life is impaired by poor health or who are disabled, across the whole population.

Indicators

- Years Of Potential Life Lost (YPLL)
- Comparative Illness and Disability Ratio
- Measure of emergency admissions to hospital, derived from Hospital Episode Statistics
- Measure of adults under 60 suffering from mood or anxiety disorders, based on prescribing



Education, Skills and Training Deprivation Domain

The purpose of this Domain is to capture the extent of deprivation in education, skills and training in a local area.

Indicators – Children and Young People

- Average point score of pupils at Key Stage 2
- Average point score of pupils at Key Stage 3
- Average point score of pupils at Key Stage 4
- Proportion of young people not staying on in school or non-advance further education
- Secondary school absence rate
- Proportion of those aged 21 or under not entering higher education

Indicators – Skills

- Proportions of working age adults (aged 25 – 54) in the area with no or low qualifications

Housing and Services Domain

The purpose of this Domain is to measure barriers to housing and key local services.

Indicators – Wider Barriers

- Household overcrowding
- LA level percentage of households for whom a decision on their application for assistance under the homeless provision of housing legislation has been made assigned to the constituent SOAs
- Difficulty of Access to owner-occupation

Indicators – Geographical Barriers

- Road distance to GP premises
- Road distance to a supermarket or convenience store
- Road distance to a primary school
- Road distance to a Post Office

Crime Domain

This domain measures the rate of recorded crime for four major crime themes – burglary, theft, criminal damage and violence.

Indicators

- Burglary (4 recorded crime offence types)
- Theft (5 recorded crime types)
- Criminal damage (10 recorded crime types)
- Violence (14 recorded crime Types)

Living Environment Deprivation Domain

This Domain focuses on deprivation in the living environment. It is made up of two sub-domains; the 'indoors' living environment which measures the quality of housing and the 'outdoors' living environment which contains two measures about air quality and road traffic accidents.

Indicators – 'Indoors' living environment

- Social and private housing in poor condition
- Houses without central heating

Indicators – 'Outdoors' living environment

- Air Quality
- Road traffic accidents

03_Passport to Success Key Projects

Employment & Economic Development

Project	Description	Lead Agency / Accountable Body	Other Information
Winsford Gateway	Strategic Masterplan - guiding principles to link the town centre, learning zone, river & brownfield developments. Consolidation of community facilities to enable more effective delivery	Passport to Success VRBC	Capital funding tbc
Employment Land & Premises	To ensure a sufficient supply of good quality employment land and premises is delivered. Woodford Park Infrastructure - provision of a new road to enable 15 acres of land to be accessed. Business Units - (including managed workspace) specifically targeted at SME's and knowledge based industries. Therefore promotional activity and market intervention may be required from public agencies	VRBC CCC	£800K New Road 2005-06 Business Units 2005 £2-4 Million
Business Park Improvement Plans	Following from the successful Green Business Parks Project at Winsford Industrial Estate, further work will be carried out to consolidate activities and to extend the concept to other sites. The Business Improvement District (BID) concept may be an appropriate delivery vehicle subject to legislation and agreement of local businesses. Issues to be addressed will be image, parking, security, accessibility etc.	VRBC Groundwork Trust	2005-06 (Depending on legislation) Winsford 1-5 Other areas in Northwich egg. Gadbrook are ongoing 2005-08
Co-location of Housing Benefits Advice at Job Centre Plus	A Housing benefits advisor has been co-located within Winsford Jobcentre Plus, to assist with jobseekers caught in the 'benefits trap'.	VRBC Passport to Success	NWDA VRBC WVHT Current

Project	Description	Lead Agency / Accountable Body	Other Information
Social Enterprise	Bizz Fizz Research phase completed. Action Plan to be drawn up 2005	Passport to Success Cheshire and Warrington Social Enterprise Network	NWDA WWHT Current
Community Chest	Small grants for individuals to cover expenses needed to overcome barriers to work or learning not available from other sources	Vale Royal CVS Passport to Success	WWHT Current
Employers Charter	Encouraging employers to sign up to a charter to help attract key target groups back/into employment through positive work/life balance strategy	VRBC Passport to Success	NWDA WWHT Current
Crèche Provision	To support activities to enable Parents with childcare responsibilities access to training/employment opportunities	Passport to Success Winsford Youth Forum	NWDA WWHT Current
Mapping Survey	A web-based system for distributing current information on employment growth and skills needs within Vale Royal to policy makers, employers and education and training providers. VRBC	Passport to Success	NWDA LSC Current
Learning & Development	Consultation work on community learning & development needs. Partnership working with Job Centre Plus to ensure local delivery of training for employment courses	VRBC Passport to Success Vale Royal CVS Job Centre Plus	NWDA LSC WWHT Job Centre Plus Current
Financial Literacy Programme	To provide support & advice on issues surrounding financial planning & debt advice	Vale Royal CAB	Tudor Trust Current
Transport to Employment	Subsidised transport/community transport extensions for home to work/training	Passport to Success Groundwork VRBC	Developers Contributions 2004+
E-quality	The provision of Cyber Cafés throughout Vale Royal with particular emphasis on the wards in the top 20% of wards in the IMD 2000	VRBC	Learn Direct NWDA LSC WWHT Current

Project	Description	Lead Agency / Accountable Body	Other Information
Women's Development	To raise aspirations and confidence amongst women, focusing on under-represented groups. Encouraging women to take-up learning and employment opportunities.	VRBC	LSC WWHT Current
Winsford & Rudheath Business Education Partnership (WARBEP)	Development of partnerships between businesses & schools to help raise the aspirations of school aged children. Cheshire Learning Partnerships	Passport to Success Business After Hours	LSC VRBC
Northwich Vision Transportation Strategy	Provision of urban transportation system which will enable town centre regeneration to take place	Northwich Regeneration Partnership VRBC	£21 Million to include contributions from Developers 2007-2012

Education

Project	Description	Lead Agency / Accountable Body	Other Information
Raising Aspirations	Additional support to young people not in employment, education or training (the NEET group), includes alternative curriculum development	Learning Communities Steering Group	Passport to Success Current
East Northwich Family Learning Centre	The provision of a family learning facility within East Northwich. To include basic skills provision and an ICT learning centre, and family link worker	East Northwich Partnership	Funding £300,000 Timescale: 2004-2007 Learning & Skills Council Children's Fund WWHT Current
Network Learning Communities	The partnership works with the community to address the learning and other needs of the town. Head teachers have increasingly worked together to further develop school effectiveness and improvement. Includes Home-School Mentor Project.	Winsford Education Partnership	Funding £50K confirmed (2003-05) £50K applied for (2006) National College for School Leadership Timescale 2003-06 Children's Fund £120,000 2003-05

Project	Description	Lead Agency / Accountable Body	Other Information
Winsford Learning Zone	Partnership between providers of post 14 education in the Winsford area that looks at the proposals to build a new site for learning in Winsford and improve links between all providers in Winsford & Northwich	Passport to Success Winsford learning Zone Steering Group	Funding: £6-8 Million Capital tbc
Specialist School Status/Verdin High School	Specialist Schools Status includes improving provision for the community	Rudheath High School Verdin High School	Funding: DFES Current
Children's Centres	A single building on or close to a primary school site that provides a high quality environment for babies and children up to school age. Includes potential sites in Winsford and East Northwich	Sure Start Cheshire	Funding: Sure Start Unit (CCC) Timescale: 2004-08
Northwich Cultural Centre	A multi-organisational community facility to act as a catalyst for town centre regeneration. Consultancy commissioned to assess feasibility of providing a range of facilities and services including arts and the library facilities (Museum, Community Space)	Northwich Regeneration Partnership	£5-7 Million 2007-2010
Northwich Railway Station	This project will redevelop Northwich Railway Station into a Community Learning Centre. Provision of a community learning centre, image improvement etc. Due to open April 2005	LSC CCC VRBC Passport to Success	2004-05 Commitment £500K. Current

Community Safety

Project	Description	Lead Agency / Accountable Body	Other Information
Winsford Extreme Sports	A project to develop the skills of young people and the community in relation to running & using the new & existing BMX/skating facilities	Groundwork VRBC	Funding: £50K Timescale: 2005-10
Structured Day Care	The provision of facilities for the treatment of drug users in Vale Royal of a drop in advice service offered by the Community Drugs Team	Community Safety Partnership	(Community Safety Partnership) Current
Reducing Anti-Social Behaviour	Weekly case conferencing to target anti-social behaviour	Community Safety Partnership	ASB Coordinators funded by VRBC & WWHT Funding: £15K
Twilight Scheme	Activities aimed at 11-19 years running during summer holiday period to divert young people away from crime & anti-social behaviour	Community Safety Partnership VRBC	(Community Safety Partnership) Current
Community Safety Wardens	As part of the Police Reassurance Project, the warden schemes resources are concentrated in the target areas	Community Safety Partnership VRBC	Funding: £150K p.a (VRBC & WWHT) Timescale: Ongoing Current
Reducing re-offending	Multi-agency scheme to reduce rates if re-offending in target wards	Community Safety Partnership	Funding: tbc
Creative Activities for Young People	Linking to the play proposals for year round provision for children & young people. Employing artists to deliver sessions & arts training & resources for play leaders. Working with the Community Safety Partnership, Winsford Youth forum, Connexions, VRBC, youth federation, police & fire service.	Vale Royal Play Forum	Funding from existing partners' budgets

Project	Description	Lead Agency / Accountable Body	Other Information
Sure Start Project	Central government initiative aiming to improve the health & well being of families & children 0-4.	Sure Start Winsford Board VRBC	Funding: £5M + £1M capital Timescale: 2003-1 Source: DFES
Tackling Obesity including Food Plan And Obesity Exercise SessionsFood Plan	Produce a strategic plan outlining: healthy eating, access to healthy, food hygiene courses etc Local produce. Delivery of activity to tackle obesity for those with BMI>30	Vale Royal Borough Council CCPCT	Funding: TBC Timescale: Ongoing 2005-06
Obesity	Implementation of obesity programmes in primary care pilot in each	Central Cheshire PCT VRBC Leisure	Funding: CCPCT, VRBC Timescale: 2004-07
Rudheath Leisure Centre	Use of leisure facilities during off peak periods for diversionary purposes	Vale Royal Borough Council	Funding: VRBC Timescale: Ongoing
Health & Regeneration Coordination	Post funded by CCPCT based with Vale Royal Borough Council to deliver community development projects that will meet the targets of the community plan in the neighbourhood renewal areas.	Vale Royal Borough Council CCPCT	Funding: £30,000 per year CCPCT

Project	Description	Lead Agency / Accountable Body	Other Information
Health Alliances	Multi-agency group seeking to improve the health outcomes & accessibility to services	VRBC & Central Cheshire	Funding: N/A Timescale: Ongoing
Smoking Cessation	Appointed County Stop Smoking Councillor targeting hard to reach areas in most need	PCT	Funding: CCPCT Current
Active Walks Coordinator	Continued & improved Active Walks programme. A project coordinator in place to deliver the programme, including training, locations for new walks, recruitment of volunteers etc	VRBC	Working in Partnership with CCPCT, Exercise on Referral, 8-10 hours per week post, targeting primarily older people
Multi Sports Activity Club	Multi sports club for young people with a disability- acts as an introduction to community sport & allows for progression into mainstream community sports clubs 9-19 year participants. Promotion in schools/community venues & support from local disability groups. Link to IFI at Winsford Sports Complex	VRBC Sport Cheshire EFDS	Initial funding from CCPCT for one year. Ongoing project
Alternative Education Programme	Alternative education sessions for young people in VR that have been or at risk of being excluded from full time education. Sessions focus on sport & physical activity. Countywide initiative being led by Sport Cheshire- delivered locally by Borough Councils.	Sport Cheshire VRBC Connexions	Coaching support needed. Timescale: 1 year minimum

Project	Description	Lead Agency / Accountable Body	Other Information
Year 10/11 Girls Programme	Active Communities led project targeting girls in Year 10/11 - not currently taking part in sport/physical activity. This project will hopefully lead to the introduction of both sessions in and out of curriculum time for girls who have a minimum participation in sport/exercise- potentially a yearly project. Use of station Community Learning Centre as a venue for initial consultation and training. Also, use of Woodford Lodge as venue for activities.	Vale Royal Borough Council	ACDF
Cascade Training	Qualification of ACDO as a Walking the Way to health 'Cascade Trainer'. Able to lead Volunteer training sessions in VR	Vale Royal Borough Council	4 courses delivered per year at 10-15 leaders trained per course
Exercise on referral	Activities for people with specific medical conditions. Referrals also eligible from other medical care providers i.e., Physio's Mental Health Wards	VRBC led project across all Borough GP's	Working in partnerships with CCPCT Joint funded by VRBC & CCPCT
Cardiac Rehabilitation	Provision of Phase 4 activity (community based activity) following release from Hospital	Vale Royal Borough Council MCHT	Funded by VRBC, Victoria Infirmary, Leighton Hospital Cardiac Dept.
Chair based exercise sessions	Classes of chair based activity designed to meet the needs of the infirm, less mobile & elderly	Vale Royal Borough Council CCPCT	Funding CCPCT & VRBC
Arts & Mental Health Programme	Developing pilot projects with mental health drop in centres, training for workers & volunteers in using arts in their centres to ensure sustainable work Partners- Primary Care Trust, MIND, Northwich Link, Vale Royal Mental Health Sector Planning Group, Cheshire County Council.	Vale Royal Borough Council	Funding : tbc

Project	Description	Lead Agency / Accountable	Other Information
Arts on Prescription	Arts to be added to GP referral scheme. Encouraging links with Health Improvement Initiatives, especially with people with long term illnesses & disability, with mental health issues & with the elderly (link to Wear Purple) Partners- Primary Care Trust, Active Communities Programme, GP Surgeries, Cheshire Dance, Wear Purple	Vale Royal Borough Council CCPCT	Funding:tbc
Wear Purple	Establish viable future funding structure for Wear Purple arts project for over 55's. Involving training for Age Concern & WVHT workers & volunteers in arts activity & training for artists in working with older people. Intergenerational projects particularly in Rudheath	Age Concern Vale Royal Borough Council	Partners-WVHT, CCC £15,000 per year
Full Time Dance Officer	Extend the part time dance officer post & expand the programme of community dance offered in the Borough, to meet rising demand, building on existing successes	Vale Royal Borough Council	Cheshire Dance, ACE, CCC £8000 per year

03_Passport to Success Key Projects

Housing & Environment

Project	Description	Lead Agency / Accountable Body	Other Information
Green Business Parks Plus	Expansion of concept to other industrial areas within & neighbouring the Neighbourhood Renewal Plan areas	Passport to Success Groundwork VRBC	Funding: £30K p.a (NWDA) TBC Timescale: Jan 04-Mar 09
Green Spaces Community Safety Project	To work with local communities to transform existing Green Spaces into safe places for recreation & enjoyment by all	Groundwork Community Safety Partnership	Funding: £505,000 £150,000 NWDA Timescale: 2004-2009
Green Routes to Work	Implementation of sustainable transport routes for journeys to & from between Winsford & Northwich	Groundwork	Funding: £70K tbc £50K NWDA Timescale: 2004-2007
Weaver Valley Regional Park	Regional Park which is an extensive area connected by natural landscape &/or cultural heritage. Promoting sustainable recreation & tourism & reclaiming derelict & contaminated land	Weaver Valley Steering Group CCC / VRBC VRBC	Funding: tbc Timescale: 2005-2009 Source: NWDA
Landlords Accreditation Scheme	Requires landlords to meet certain minimum requirements in relation to the physical condition of their properties & management procedures	VRBC	Funding: N/A Timescale: Ongoing
Vale Royal Landlords Forum	Set up to provide the opportunity for representatives of the local authority, private sector landlords, Housing Associations, voluntary housing organisations & other interested parties to meet on a regular basis to discuss common issues to improve & maximise the contribution of the private rented sector to meet this need	VRBC	Funding: N/A Timescale: Ongoing
Wharthon Priority Grant Area	Set up target housing renewal funding to a specific area together with the promotion of energy efficiency & other minor works initiatives	VRBC	Funding: Within existing budgets Ongoing

Project	Description	Lead Agency / Accountable Body	Other Information
Rent Deposit Scheme	To enable homeless households to access private sector accommodation as an alternative to Bed & Breakfast or temporary accommodation	Vale Royal Borough Council	Funding: People First
Private Sector Renewal Grants	To provide assistance to homeowners, private sector landlords for the repair, improvement and adaptation of housing	Vale Royal Borough Council	Funding: Vale Royal Borough Council
Affordable Warmth	To develop affordable warmth strategy to reduce fuel poverty	Vale Royal Borough Council	Funding: Vale Royal Borough Council
Supported Housing for Vulnerable People	Range of schemes provided by partners to provide additional support to vulnerable people including domestic violence outreach, support for people with mental health issues etc.	Vale Royal Housing Partnership	Funded through Cheshire Supporting People
Neighbourhood Project	Improvements of local neighbourhoods WVHT estates working closely with Neighbourhood Renewal Programme	WVHT	Funding WVHT
Public Art Programme	Public art part of new urban developments e.g. Northwich Vision, Winsford Gateway. Involving artists to contribute ideas & designs. Public Art in Village & rural environments	Vale Royal Borough Council	Funding; tbc

04_Key Indicators

Income and Unemployment - Creating a diverse economy

Action	Indicator	Accountable Body	Target 2005	Target 2010
Reduce the rate of unemployment	<p>Number of adults and children in Income Support households</p> <p>Adults and children in income based Job Seekers Allowance households</p> <p>Unemployment claimant count of women aged 18-59 and men aged 18-64</p> <p>Incapacity Benefit claimants women aged 18-59 and men aged 18-64</p> <p>Severe Disablement Allowance Claimants</p> <p>Number of 16-18 in employment</p> <p>Participation levels in New Deal</p> <ul style="list-style-type: none"> • 18-24 • 25+ • Lone Parents <p>Number on low wage</p> <p>Number claiming family tax credits</p>	Passport to Success	To keep figure below government's target for unemployment	To keep figure below government's target for unemployment
Increase wealth by investment	<p>Number of businesses in Vale Royal</p> <p>Number of businesses assisted</p> <p>Number of new start-ups</p>	L.S.P.	<p>100 per annum</p> <p>20 per annum</p> <p>50 per annum</p>	National Target to halve rates by 2010
Give people the skills and support to equip them for the jobs available	<p>Number of people completing training courses and finding permanent employment within 6 months and 12 months</p> <p>Ratio of pre-school children to pre-school childcare places</p> <p>Percentage of young people not in employment, education or training</p>	<p>Passport to Success</p> <p>Sure Start Cheshire</p> <p>Connexions</p>	<p>To be negotiated with the NWDA</p> <p>To ensure that the difference in the number of formal childcare places available in England for children aged 0-14 between the 20% most disadvantaged wards and other areas is no more than 3.7 places per 100 children</p> <p>5.5%</p>	5.5%

HEALTH – IMPROVE THE HEALTH AND WELL-BEING OF RESIDENTS

Action	Indicator	Accountable Body	Target 2005	Target 2010
Reduce health inequalities	Low Birth Weight Teenage Pregnancy Rates Measure of acute morbidity Number of mothers who continue smoking during pregnancy	CCPCT Sure Start Partnership		National Target to halve rates by 2010
Encourage healthier living at home and at work	Number of people taking regular exercise Number of people smoking Indicators for coronary heart disease	Vale Royal Borough Council CCPCT CCPCT	By 2006 a reduction in the smoking figures 3653	Reduce death rate for people under 75 by 40%
Involving local communities in determining health issues	Number of community development programmes	VRBC CCPCT	Local targets to be developed as first stage of the plan	Local targets to be developed as first stage of the plan
Improve treatment and availability for drug and alcohol misuse Improve levels of mental health	Number of people referred Number of people treated Proportion of population suffering mental ill health based on prescribing	CCPCT CCPCT Connexions Councillor for Young People		

EDUCATION - IMPROVE THE LEVELS OF SKILLS, EDUCATION AND TRAINING

Action	Indicator	Accountable Body	Target 2005	Target 2010
Improve achievement and attendance at primary and secondary schools	<p>Average point score at Key Stages 2, 3 & 4</p> <p>Number of unauthorised absences</p> <p>Number of authorised absences</p> <p>Rate of unauthorised absences in secondary schools</p>	<p>Winsford Education Partnership</p> <p>East Northwich Schools Cluster</p> <p>Connexions</p> <p>Education Welfare Officers</p>	<p>National targets 2004/5</p> <p>Key Stage 2 85% of pupils achieve 4+ in English & Maths 35% 5+</p> <p>Key Stage 3 75% of 14yr olds to achieve at least level 5 in English & Maths. 70% of 14 yr olds to achieve at least level 5 in Science.</p> <p>Key Stage 4 92% of 15 yr olds to achieve 5 or more GCSE's at grades A*-G inc English & Maths.</p> <p>Every LEA to have a rate of achievement of at least 30% of pupils achieving 5 or more GCSE's at A*-C.</p> <p>Each school to have no fewer than 20% of pupils achieving 5 or more GCSE's at grades A*-C.</p>	
Increase in the number of young people entering further, higher education or learning opportunities	<p>Rate of authorised absences in secondary schools</p> <p>Proportion of young people in post 16 learning</p>	Connexions	<p>91%</p> <p>/</p>	<p>91%</p> <p>50% (National target)</p>
Raise aspiration levels for people and encourage participation in lifelong learning at local facilities	Proportion of those aged 18-30 participating in Higher Education Participation rates in lifelong learning	<p>VRBC</p> <p>Connexions</p> <p>EBLO at Woodford Lodge School</p>	<p>National Targets</p> <p>Improve the basic skills levels of 1.5m adults by 2007.</p>	Reduce by at least 40% the number of workers who lack NVQ2 or equivalent qualifications by 2010

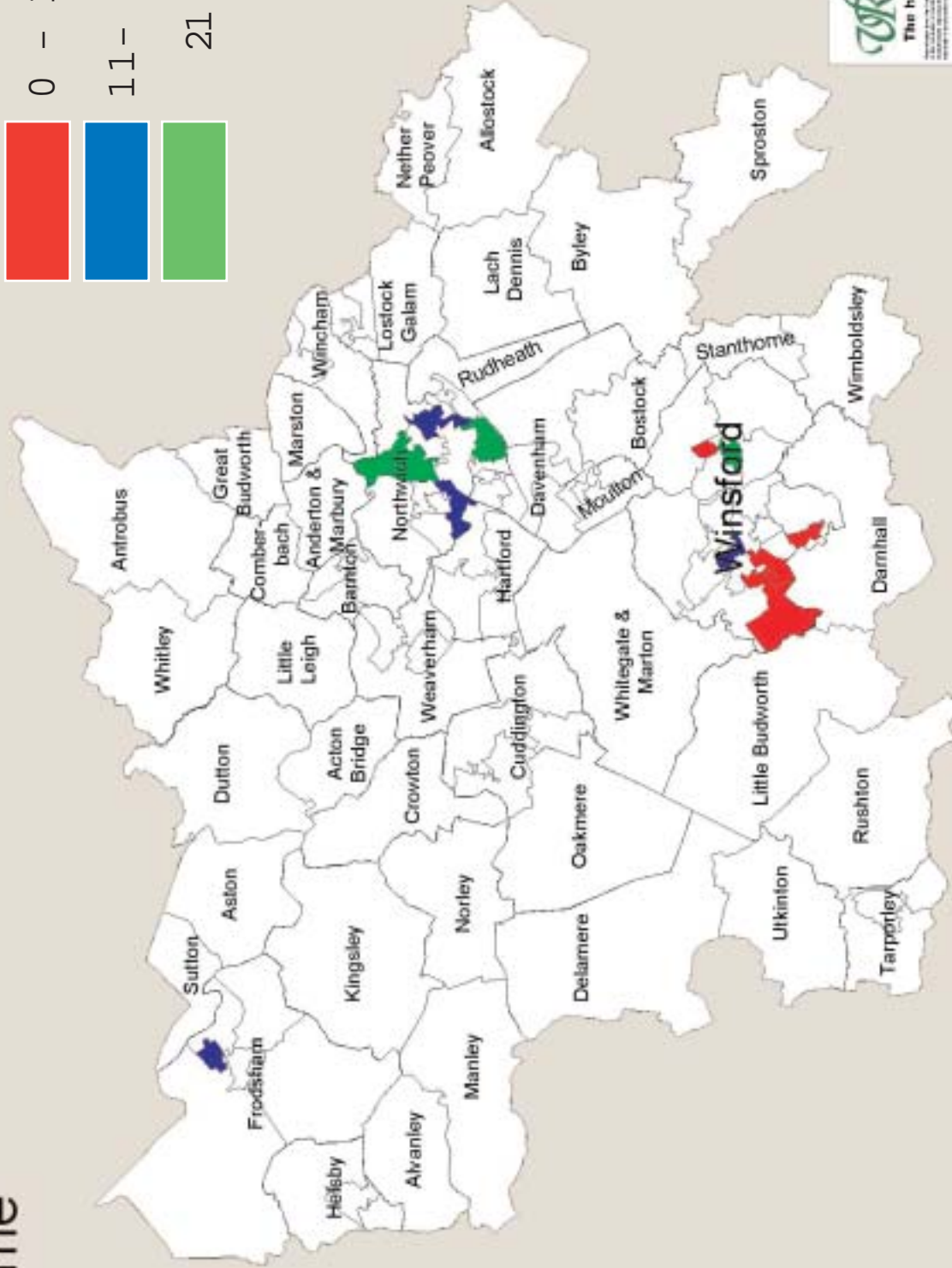
COMMUNITY SAFETY – IMPROVE LEVELS OF COMMUNITY SAFETY

Action	Indicator	Accountable Body	Target 2005	Target 2010
Increase impact of community safety presence	Perception and fear of crime amongst the community at large and amongst vulnerable groups in particular Number of Community Safety Wardens Fear of crime survey	Community Safety Partnership	< 23% in NR area feel unsafe at night	< 16% in NR area feel unsafe at night
Reduce impact of crime and disorder	Number of reported 'signal' offences <ul style="list-style-type: none"> • Burglary • Theft • Criminal Damage • Violence • Racial Incidents 	Community Safety Partnership CAT Team	Average per 1000 to be equal or less than Cheshire average 10% reduction in volume	Average per 1000 for NR areas to be equal to or less than VR average 15% reduction in volume
Reduce impact of substance misuse	To be determined as first phase of programme Reported incidents of anti-social behaviour	Community Safety Partnership		
Reduce impact of anti-social behaviour	Costs of repairs to play areas Police recorded disorder WVHT tenant complaints CSW complaints Local NR area specific evaluation (NEW)	Community Safety Partnership Connexions Vale Royal Borough Council Weaver Vale Housing Trust	Average per 1000 to be equal or less than Cheshire average 10% reduction in volume	Average per 1000 for NR areas to be equal to or less than VR average 15% reduction in volume
Improve Road Safety	To be determined as first phase of programme			

HOUSING AND ENVIRONMENT — CREATE A BETTER LIVING ENVIRONMENT

Action	Indicator	Accountable Body	Target 2005	Target 2010
Improving the condition of social and private housing	BV62 Number of houses made fit or demolished in the private sector BV64 Number of private sector dwellings returned into occupation or demolished Investment by social landlords	Vale Royal Housing Partnership	2004/05 – 3% 2004/05 – 11% Currently 61% Non-decent	2005/06 – 4% 2006/07 – 5% 2005/06 – 13% 2006/07 – 15% 100% Decent
Provide supported housing for vulnerable people	Number and occupancy of dwellings provided for key target groups	Vale Royal Housing Partnership	2003 total 3033 Cheshire County Council Supporting People Strategy	
Increase range of high quality affordable housing	Number of homes provided under special schemes to provide low-cost housing for rent and purchase No of people prevented from becoming homeless	Vale Royal Borough Council	381 Units across Vale Royal by 2007 Average 127 completions per year	
			2004/05 - 50	2005/06 – 70 2006/07 - 90
Recycle derelict and previously developed land	Proportion of new development on previously developed land Amount of derelict land re-used for 'soft' end uses e.g. open spaces, woodland Percentage of unstable land above former salt mines which has been stabilised	Vale Royal Borough Council	2004/5- 55%	2006/7- 65%
Increase involvement of local communities in determining the living environment	Number of community groups involved in projects	Groundwork	Groups involved in 100% of green space community safety projects	Groups involved in 100% of green space community safety projects

Income



Living Environment

